



WARWICK

SENIOR HIGH SCHOOL

355 Erindale Road
Warwick WA 6024
T (08) 6240 4400
F (08) 6240 4497

Email: warwick.shs.enquiries@education.wa.edu.au
Website: www.warwickshs.wa.edu.au

MAY 2014

NEWSLETTER NO 2

Administration Office (Front Office) Hours

Monday to Friday
8:15 am – 3:30 pm

Uniform Shop Hours

FRIDAY 8:00 am – 8.45 am

FROM THE PRINCIPAL'S DESK

PARENT LIAISON COMMITTEE – MEMBERS WANTED

Gaining feedback from parents/carers on a regular basis, is highly desired by a school. To improve the parent/carer input to the school, I am establishing a new committee called the Parent Liaison Committee. This committee will consist of two or three parent representatives from each year group (i.e. Years 8 to 12), who will meet with the School Executive Team (Principal, Associate Principal) once per term.

Matters discussed will be of the parent representatives choosing and they will be asked for feedback on matters raised by the Executive Team. The meeting will be of one (1) hour duration, at a time suitable to its members.

If you are interested in joining this group, please call the Principal to register your interest.

INDEPENDENT PUBLIC SCHOOL STATUS 2015

Warwick SHS desires to be an Independent Public School, to have greater autonomy in managing its business and particularly, to choose the best teachers to suit our students' needs and thus gain the best outcomes for our students.

Ms Del Pin and myself have attended two days of training, assisting us to present our claim for IPS status to a panel, to gain IPS to begin in 2015. More information on IPS will be forthcoming to you soon.

WINTER UNIFORMS

As it is now getting cooler, students need to have their school windbreakers/windcheaters and longer legged pants. Parents must purchase the winter items. Orders can be done online or by filling in the order form that was mailed home recently.

LOST PROPERTY?

All items of lost property are now held in the Administration Office. If your child loses uniform items or personal possessions, please call the reception, 6240 4400.



Lesley Wintle
Principal

DATES TO REMEMBER FOR TERM 2

MONDAY – 19 May

Year 11 Childcare & ACE "Baby Think it Over" Program

THURSDAY – 22 MAY

Senior School Speech Competition

MONDAY 26 MAY

Year 8 Immunisation (HPV [2] & Adacel [DTP])

MONDAY 26 MAY

P&C Meeting – 7.15 pm
Staffroom (above Administration)

FRIDAY – 30 MAY

Year 8 and 10 Exams Start

MONDAY – 2 JUNE

**WESTERN AUSTRALIA DAY
PUBLIC HOLIDAY**

TUESDAY – 3 JUNE

Year 11 and 12 Exams Start

These dates above are a guide only and may be changed throughout the year.

P&C MEETING NOTIFICATION

The Warwick SHS Parents and Citizens' Association next general meeting will be held on Monday 26 May 2014 at 7.15 pm in the staffroom (above Administration).

New members welcome and encouraged. No one is forced to take on Executive positions.

Angela McGuinness - President

Up to date notifications from **Warwick P&C**.
Find us on our **Facebook** page. "LIKE" us on **Facebook**.
<http://www.facebook.com> Warwick senior High School P&C

WORK PLACE LEARNING 2014

Work Place Learning provides an invaluable opportunity for students to develop the many skills they need for employment.

We have over 100 students who have commenced their work placements in various industries. The teachers have spent several sessions preparing the students for their work place. Students will gain first-hand experience in preparation for their transition from school to work and gain an understanding of what it is like to work in various industries.

If you have a business or would like more information about taking on a student for Work Place Learning, please contact Elise Smith on 6240 4457 or Maureen Read on 6240 4425.

Elise Smith – VET Coordinator

SCHOOL TERMS & HOLIDAY BREAKS 2014

TERM 2:	Wednesday 30 April – Friday 4 July
HOLIDAYS:	Saturday 5 July – Monday 21 July
TERM 3:	Tuesday 22 July – Friday 26 September
HOLIDAYS:	Saturday 27 September – Monday 13 October
TERM 4:	Tuesday 14 October – Thursday 18 December
HOLIDAYS:	Friday 19 December

2015 COMMENCES – Monday 2 February 2015

DIARIES NOW AVAILABLE



At a parent meeting in 2013, parents requested, that students have a hard copy diary in which to enter their homework/assessments. The school has organised for diaries to be available to students. They can be purchased from the front office at a cost of \$10.00.

The following students MUST have the school diary:

- All Year 8 students
- All Year 9 students
- Year 10 Academic Extension Program students
- Year 11 and 12 ATAR students.

The use of the school diary will be linked to our Study Skills program and it is important that all the above mentioned students have a copy.

We thank parents/carers for their support in ensuring students have all the appropriate equipment for school.

Marisa Del Pin – Associate Principal

YEAR 8 VACCINATION PROGRAM

Almost 90 Year 8 students received their Human Papillomavirus (HPV) and Chicken Pox immunisations on Monday 24 March. This highly successful program was coordinated by the City of Joondalup Immunisation Section. The smooth implementation on the day was made possible due to a great team effort involving; Year 8 Pastoral Care teachers; Year 8 Coordinator, Mrs Goldman; Associate Principal, Mr Bariolo; Student Services Manager, Mr Bell; and our great school nurses Mrs Ros Webster and Ms Fran Lynch.

Students who were absent will be contacted directly to rebook their missed vaccinations. Parents can also contact Ms Karyn Dore directly on 9400 4938 to make an appointment.

The next visit will be on Monday 26 May and I anticipate that everything will occur the same way. The students will receive their 2nd dose of Gardasil (HPV) and the DTP (Diphtheria/Tetanus/Pertussis) booster.

Ros Webster, School Nurse & Fran Lynch, First Aid Officer

MESSAGE FROM THE SCHOOL NURSE

Thanks to all the parents for providing the Health Care team at the school with all their child's medical details. If there is a change to your child's medical status while at the school, please inform the school as soon as possible. Similarly, if your contact details change, please ring the school and inform the administration so the computer records can be updated.

I hope all the Year 8 students have settled well into high school life and the Year 12 students are trying to optimise effective study by having a study plan in place and keeping their stress levels as low as possible. Healthy food, regular exercise and a quiet place to study at home, will enhance their success. Learning personal organisational skills will also benefit them.

Please contact the school immediately, if you have any concerns about your child's education or welfare at school.

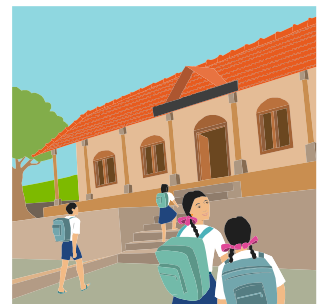
I wish all Warwick parents and students a happy continuance of the school year. Remember to take care of yourselves and your families.

Ros Webster, School Nurse

ABSENT FROM SCHOOL?

If your child is going to be absent from school and you wish to advise the school of your child's absence via text message.

The number to use is
0407 983 896.





EMAIL ADDRESS REQUIRED PLEASE

To reduce the amount of money spent by the school (and the P&C) on postage, we require ALL families to supply their email addresses to the school.

This will allow us to email our school newsletters and some letters direct to families.

Please return the following slip to the school administration office (or fax to 6240 4400 or email the information to:

warwick.shs.enquiries@education.wa.edu.au

✂ -----

Student Name/s YEAR: PCG:

..... YEAR: PCG:

Parent/Caregiver Name:

Preferred email address:

(please print)

P.S. All correspondence will be sent as bulk email to parents/caregivers using the BCC format to conceal email addresses. Your email address will not be distributed to any other agencies or persons.

SCIENCE DEPARTMENT NEWS

Documentary Permission Letter

By now you should have received a letter outlining the school's position on the showing of PG rated documentaries in Science. If you wish your child not to watch PG documentaries then can you please contact your child's science teacher and opt out. Teachers can be contacted by phone or by the relevant email address which is at the bottom of the letter. If a reply is NOT received from you, then we will assume your permission is granted. If you are yet to receive a letter then please contact Science HOLA, Mr Johnson, to arrange a copy to be sent to you.

Exercise Books

The Science Department recommends the use of a single exercise book for student's science work and not a 5 subject spiral bound book. A single exercise book (either a 48 or 96 page) allows teachers to collect the books and check them for organisation and completion rate. This is especially important in Year 8 where we can start the students off with good habits that they will use in their future years at school. With new unit of work starting in term 2, it is now a good time to equip your child with the equipment necessary for Science.

Science Homework and Revision

As part of your child's Science program, regular homework will be given. In lower school, this homework often comes from the students' science workbooks that all students receive each term. A lot of the activities in this book are literacy based which aids the student's ability to read and comprehend the content covered. Please check with your child and check their science workbook to monitor their work in Science.

In upper school, students will have homework several times every week. This may involve reading the textbook and answering questions, completing assignments and completing terminology lists and the like. One excellent type of home is to do past WACE or the TEE past papers so they become familiar with the type of questions asked and the answers expected. All science subjects (with the exception of Psychology, as it is a very new course) have a file of previously used questions. To access one of the files, please ask your child to obtain one from their Science teacher.

All students should be engaged in a regular review and revision program where they go over past work in order to remember the required content. This revision is crucial to student success in all years.

Equipment to Bring to Science

We would like to remind all parents to ensure that your child comes prepared for Science (and school in general) with the correct equipment. All students should have pens (maybe 3, in case one gets lost!), pencil, ruler, student workbook and exercise book or file for them to write in and (if required) their textbooks in upper school. A lot of learning time can be wasted getting students equipped with the correct equipment that needs to be used in the teaching and learning program.

School Battery Recycling Program

Again this year we are part of the School Battery recycling Program. West Australians dispose of an estimated 18 million batteries per year and most of these end up in landfill, where the chemicals leach out and contaminate the soil for a very long time. So this year

give your used batteries to your child and get them to drop them off to their Science teacher so we can dispose of them in our battery bin. Once the bin is full it will be picked up by the City of Stirling and the batteries recycled. Dry cell batteries such AA, AAA, C, D, button batteries, 9V and 6V are recycled, not car or mobile phone batteries. Help us to save our environment by sending your used batteries to your child's Science teacher. The Warwick school community have recycled 44 kilograms of batteries over the last two years.

Making Teacher Contact

We always encourage teachers to make regular contact with parents and to keep parents informed on their child's progress. If you have any questions regarding your child's progress please make contact with the Science Department on our direct line – 6240 4413.

Graham Johnson – Head of Department, Science

2013/2014 Contributions & Charges

2014 Contributions & Charges are now payable

Students whose charges are not paid up to date may not be invited to attend extra-curricular events e.g. reward excursions, river cruises, camps etc. **Year 12 students must have outstanding charges from previous years paid or certificates, reference and graduation photos may be withheld.**

To allow the school to provide all students with optimal educational outcomes, please make every effort to pay the Contributions and Charges. These funds go directly to the Learning Areas to subsidise resources and equipment for the use of our students.

Payment Options:

- Cash/EFTPOS – in person at the front office
- Cheque/ Money order – payable to "Warwick Senior High School"
- Credit Card
- Internet

ACCOUNT NAME: Warwick Senior High School

BSB: 306 074

ACCOUNT No.: 419 704 8

Reference: student name

Are You Experiencing Financial Difficulties?

The school is sympathetic to families suffering financial hardship. If your family is experiencing financial difficulties; please contact School Officer, Christine Lott, on 6240 4400 to arrange a payment plan. Contributions and charges may be paid off at as little as \$10 per week.

Thank you to all the parents who have already made payment to the school.

Rose Gannaway - Business Manager

INSURANCE COVER FOR STUDENTS

Please be advised that the Department of Education does not cover students for injury due to accidents while at school.

Parents are asked to purchase insurance cover for their children if they so desire.

EBM Insurance Brokers offer a 24 hour a day, 7 days per week insurance cover for \$29 per year. This includes medical cover, ambulance cover and many other aspects. A flyer is enclosed with further information and you can simply apply online at:

www.studentcover@ebminsurance.com.au

We encourage you to pay this small cost for your peace of mind, and possible financial benefit. Those in specialist sporting programs are strongly urged to apply.



	Monday	Tuesday	Wednesday	Thursday	Friday	Sat/Sun
1 APR/MAY	28 School Development Day P&C Meeting 7.15 pm	29 School Development Day	School Resumes for all students 8.30 am	1	2 Yr 12 Study Skills P2	3/4
2	5	6 Year 6 to High School 2015 Program Testing	7 Year 7 to High School 2015 Program Testing	8	9 High School Cup Netball Day Carnival 8-12	10/11
3	12 Year 10 Parent Night 7 pm	13 NAPLAN TESTING Year 9 Year 8 Lightning Carnival	14 NAPLAN TESTING Year 9	15 NAPLAN TESTING Year 9 Careers Expo (am)	16	17/18
4	19 Year 11 Childcare & ACE“ Baby Think it Over” Program	20	21	22 Senior School Speech Competition	23 Year 12 finish Workplace Learning – Semester 1	24/25
5	26 Year 8 Immunisation (HPV [2] & Adacel [DTP]) P&C Meeting 7.15 pm	27	28 Year 11 Psychology – Excursion Perth Zoo	29	30 Year 8 & 10 Exams Start	31/1
6 JUNE	2 WESTERN AUSTRALIA DAY PUBLIC HOLIDAY	3 Year 11 & 12 Exams Start	4	5	6 No WPL Year 11 & 12 Year 8 & 10 Exams Finish	7/8
7	9 State School Girls Netball Trials, Umpiring 8-12 TBA	10 Year 11 & 12 Exams Finish	11 Year 9 Lightning Carnival	12	13	14/15
8	16	17	18	19	20 Year 12 start Workplace Learning – Semester 2	21/22
9	23 P1 Year 8 HEc Incursion P&C Meeting 7.15 pm	24 P2 Year 8 HEc Incursion Year 10 Lightning Carnival Reports mailed	25 P5 Year 8 HEc Parent Afternoon tea	26 P6 Year 8 HEc Parent Afternoon tea	27 Senior School Curtin Uni English Conference P1 & 2 Year 8 HEc Incursion (Morning Tea)	28/29
10 JULY	30 Year 10 Course Counselling for Year 11 Year 9 Outdoor Ed Camp	1 Assembly (Whole School) Top Student Awards P1.	2 Students commence School 11.15 am (1/2 day) Parent/Teacher Meeting 3.00 to 5.30 pm	3 Year 10 Course Counselling for Year 11	4	5/6